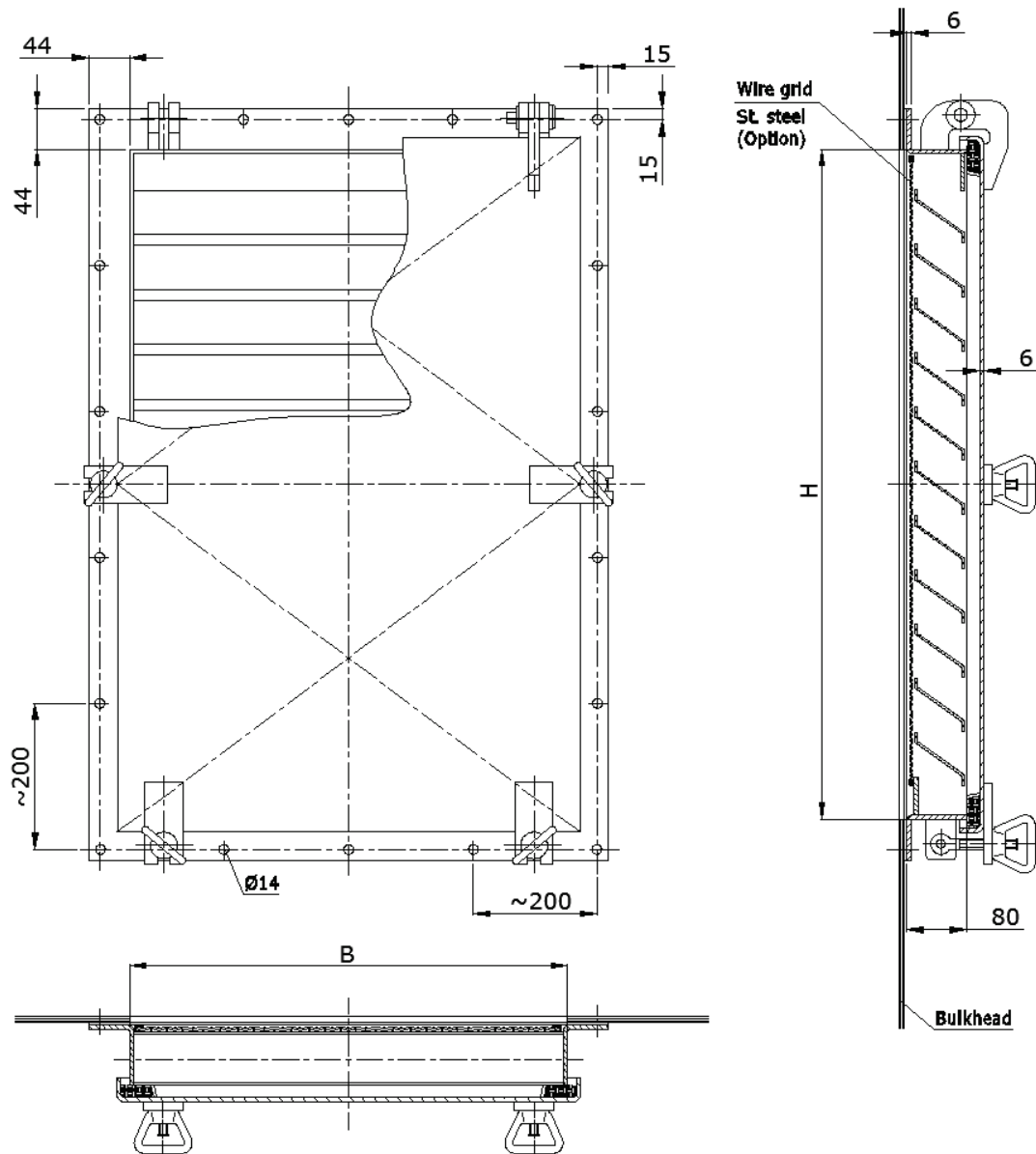


DESCRIPTION

The VLH marine ventilation louvers are designed to external air intakes or outlets of ventilation systems on seagoing ships and offshore objects. Louver is provided with weather-tight hatch. Casing, hatch and blades are made of mild steel, hot-dip galvanized. Shafts and bolts are made of stainless steel 316L and swing-out nuts of brass.

DIMENSIONS

MARKING:

Example: VLH type louver, dimension BxH=750x1200 and hinges position "top": VLH-750x1200-TOP