



DESCRIPTION

Marine mist eliminator louvers DSBF are destined for installation on steel or aluminum walls of superstructure of seagoing ships and offshore objects as air intakes of ventilation systems. Louvers consist of flanged, drilled frame, a set of easy detachable filtering cassettes and hinged, framed high efficiency mist separating profiles, specially shaped. Front access to filter removal after opening of demister. Louvers can be fitted in positions where weather-tight closing device (Convention ILL 1966) are not required. Regulations of SOLAS for fire closings of external ventilation openings are to be observed. Material: frame, grating for filter cassettes – carbon mild steel; mist eliminator profiles – sea water resistant aluminum; shafts – stainless steel; filter material – synthetic fibre.

Profiles arrangement (in dependence to demister position):

- S – demister fitted to star board bulkhead (shown on the drawing),
- P – demister fitted to port bulkhead (mirror view).

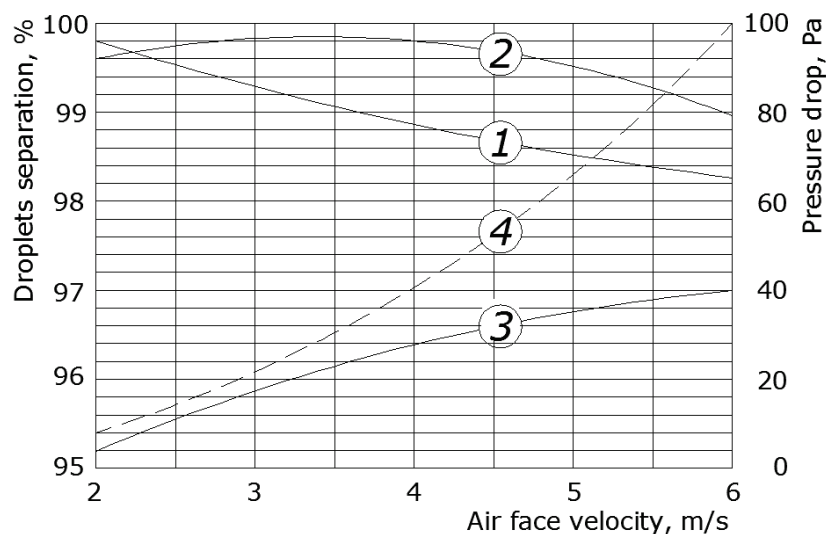
Hinges position:

- L – left (shown on the drawing),
- R – right.

Filter class – G4 acc. to EN 779:2002. Recommended air face velocity: 3 m/s. Initial pressure drop: 90 Pa. Recommended final pressure drop: 280 Pa. Other filter classes and types available on request.

Surface treatment: steel parts hot-dip galvanized. Preservation with set of marine paints available on request.

PERFORMANCE CHART



① - rain, droplets 100 um, 10 litres/min/m²

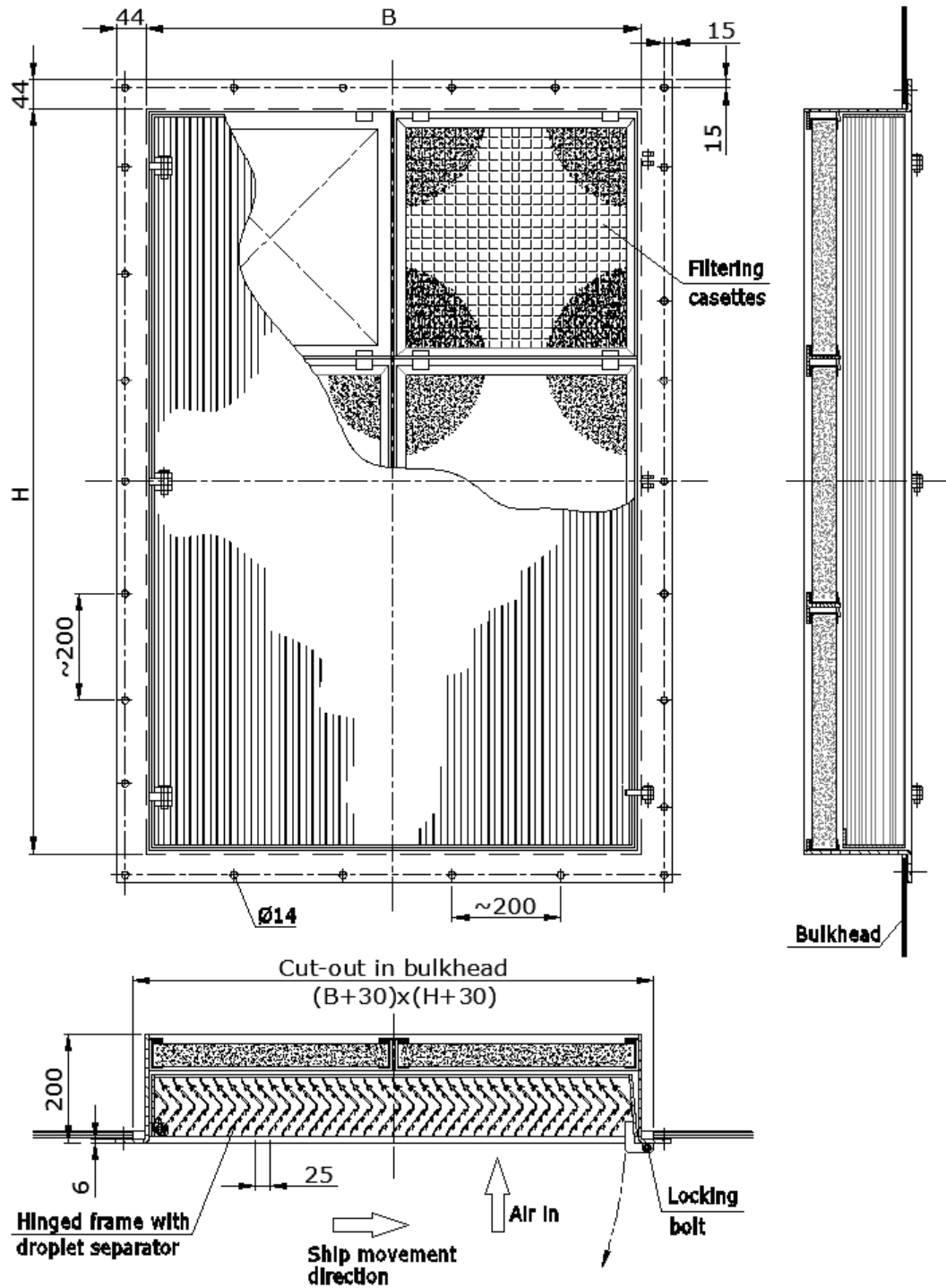
② - rain, droplets 100 um, 25 litres/min/m²

③ - fog, droplets 30 um

④ - pressure drop across demister, Pa



DIMENSIONS



MARKING

Example: DSBF type demister louver of dimensions B=1200 and H=1800, for installation on starboard bulkhead S and left hinged L: DSBF-1000x1800-S-L