



DESCRIPTION

Marine mist eliminator louvers DSH are destined for installation on steel or aluminum walls of superstructure of seagoing ships and offshore objects as air intakes of ventilation systems. Louvers are provided with weathertight cover (hatch). Louvers consist of flanged, drilled frame incorporating vertical, high efficiency mist separating profiles, specially shaped. Material: frame, blades, cover – carbon mild steel, shafts – stainless steel, swing-out nuts – brass, cover gasket – rubber, mist eliminator profiles – sea water resistant aluminum.

Profiles arrangement (in dependence to demister position):

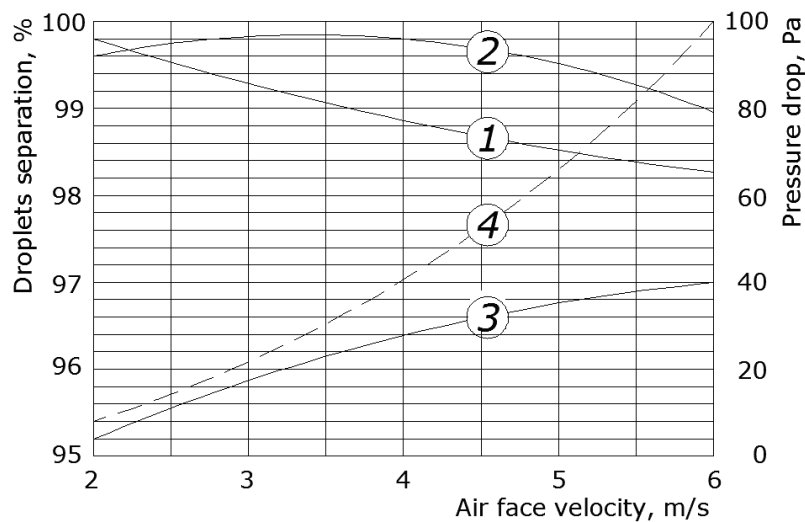
- S – demister fitted to star board bulkhead (shown on the drawing),
- P – demister fitted to port bulkhead (mirror view).

Cover hinges position:

- top,
- bottom,
- right,
- left.

Surface treatment: steel parts hot-dip galvanized. Preservation with set of marine paints available on request.

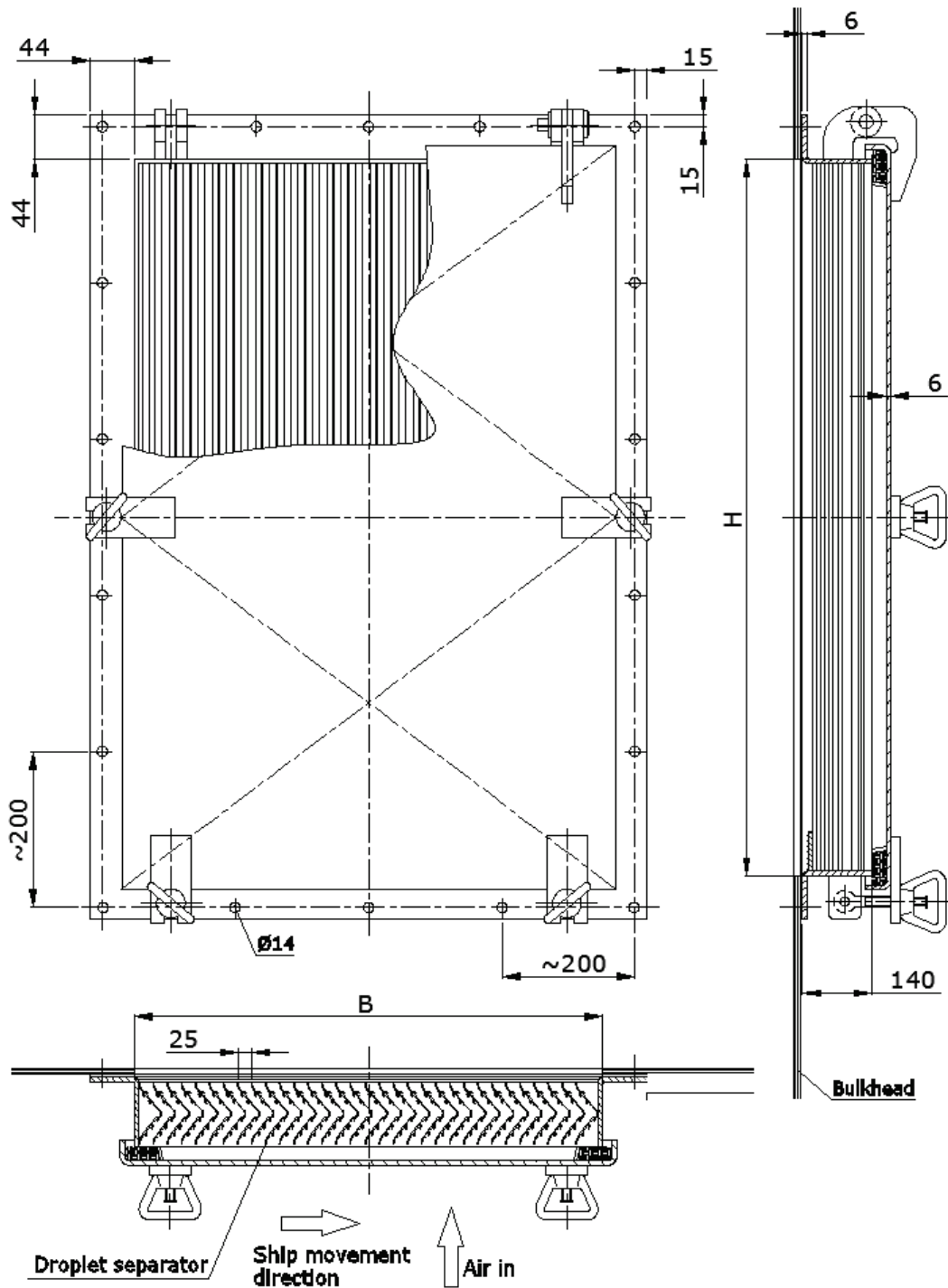
PERFORMANCE CHART



- ① - rain, droplets 100 μm , 10 litres/min/m²
- ② - rain, droplets 100 μm , 25 litres/min/m²
- ③ - fog, droplets 30 μm
- ④ - pressure drop across demister, Pa



DIMENSIONS



MARKING:

Example: DSH type louver of dimension BxH=1200x1800 and for installation on star board bulkhead and with cover "top" hinged: DSH-1200x1800-S-TOP