

**DESCRIPTION**

Punkah-Louvres (PKL) are suitable for high velocity spot cooling applications. The unit is fully adjustable and can be used as either a jet or diffused air outlet. Fully adjustable for direction of throw, they are particularly useful where ventilation is required in remote areas as its air velocity reduces the length of branch ducting need. In heating systems the high velocity air delivered from the Punkah-Louvre affords adequate forced convection, avoiding stratification and makes possible the use of higher duct temperatures. PKL operates at high pressure. Where its operating pressure bears a high ratio of the duct system, it facilitates balancing without the use of dampers, deflectors or turn vanes. PKL is in cream compression moulded plastic with a metal back plate.

Type	Description
PKL/A	The simplest form providing wide range directional adjustment with fingertip control. Complete shut-off is obtained in one clearly marked position. Available in sizes 3 to 7.
PKL/B	Have additional feature of an internal control damper. This arrangement permits complete universal directional adjustment of the outlet together with volume regulation in any position. Available in sizes 3 to 6.
PKL/D	Provide a choice between the characteristics of the high velocity jet outlet and jet position, a fully adjustable high velocity air system is obtained. With the louvre in the diffused position draftless diffusion is provided. Shut-off is obtained at mid-way position. Available sizes 3 to 6.

**TECHNICAL SPECIFICATION & DIMENSIONS**

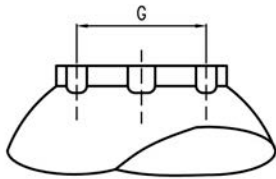
- material upper part: cream compression molded plastic
- material back plate: mild steel
- material fixing ring: mild steel
- material gasket: flexible polyurethane foam

Size	Dimension [mm]								Weight without fixing ring [kg]
	$\varnothing A$	$\varnothing B$	$\varnothing C$	D	E	F	$\varnothing G$	Nx $\varnothing P$	
3	95	76	118	86	38	41	38	3x5	0.27
4	121	102	145	111	52	49	51	3x5	0.48
5	151	127	175	139	70	59	64	3x5	0.76
6	176	152	203	162	86	70	76	3x5	1.10
7	203	178	229	191	111	79	89	4x5	1.56

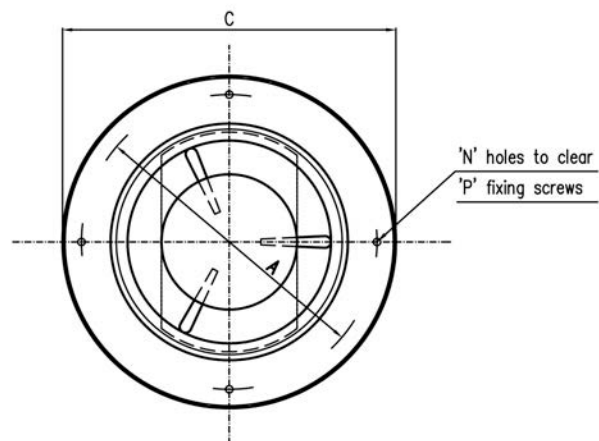
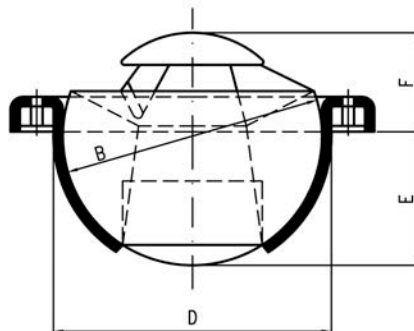
Standard Punkah-Louvres are supplied with 9.5mm wire mesh guard soldered to back flange.

Dimension E is increased by 3mm.

For type A & B



For type D



### Fixing ring

Size	Dimension [mm]					Weight [kg]
	$\varnothing A$	$\varnothing B$	$\varnothing C$	Jx $\varnothing K$	Nx $\varnothing P$	
3	95	106	86	4x3	3x5	0.03
4	121	133	111	5x3	3x5	0.12
5	151	162	139	6x3	3x5	0.14
6	176	191	162	8x3	3x5	0.19
7	203	218	191	8x3	4x5	0.20

