

**DESCRIPTION**

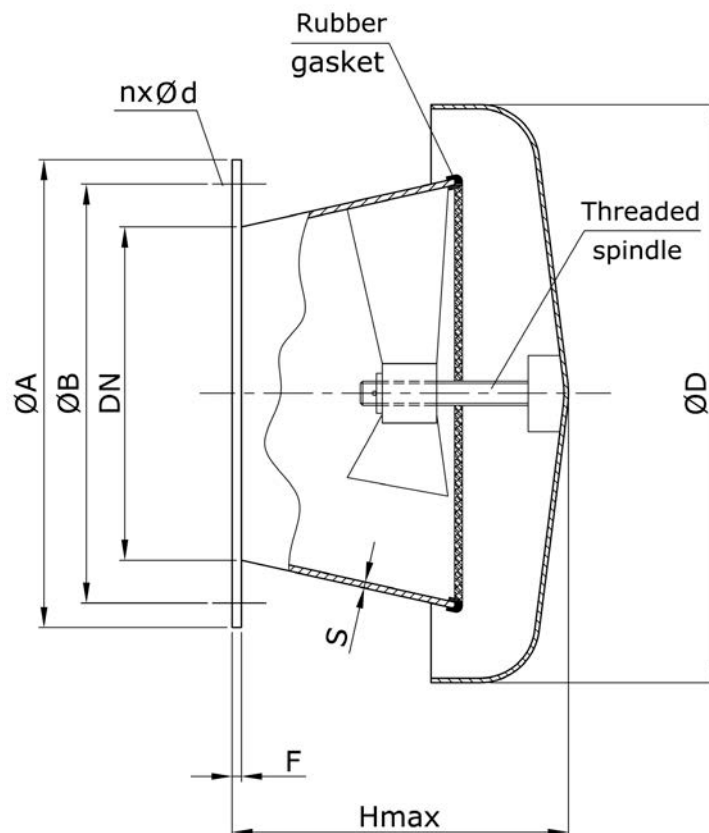
The cabin ventilator heads CVH are destined for installation in forced or natural ventilation systems of seagoing ships and offshore objects. They are provided with the weather-tight rotating lid. It is made of steel or aluminum. Spindle is made of brass, packing – rubber profile. Surface treatment: hot dip galvanized (painting with epoxy primer SWA 7423-014-250 on request). Ejector vents made of aluminum are without any surface treatment.

Transition flange F-TFC is an accessory destined for fitting of CVH cabin ventilator head to a steel bulkhead. It is made of R35 mild steel (aluminum execution available on request).

**TECHNICAL SPECIFICATION & DIMENSIONS**

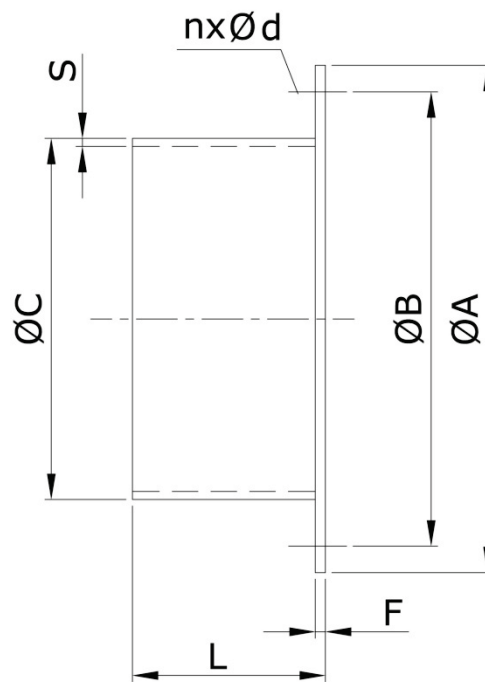
Dimension L must be specified by the Customer.

Cabin ventilator heads										Flange			
Type	Dimensions [mm]								Weight [kg]	Type	Dimensions [mm]		Weight [kg]
	DN	ØA	ØB	ØD	nxØd	F	S	H <sub>max</sub>			ØC	S	
CVH100	100	180	146	200	4x9.5	4	4	120	3.0	F-TFC100	114.3	3.6	2.9
CVH130	130	200	169	300	4x11.5	4	3	150	3.6	F-TFC130	139.7	4.0	3.6
CVH150	150	230	200	400	4x14.0	4	3	160	5.0	F-TFC150	168.3	4.5	5.0
CVH200	200	280	244	500	4x14.0	4	3	250	10.0	F-TFC200	219.1	5.9	7.8
CVH250	250	330	295	400	6x14.0	6	3	250	15.0	F-TFC250	287.0	6.0	9.3
CVH300	300	380	350	500	6x14.0	8	4	250	25.0	F-TFC300	324.0	6.0	11.4



**Flange F-TFC**

Type	Dimensions [mm]		Weight [kg]
	$\varnothing C$	S	
F-TFC 100	114,3	3,6	2,9
F-TFC 130	139,7	4,0	3,6
F-TFC 150	168,3	4,5	5,0
F-TFC 200	219,1	5,9	7,8
F-TFC 250	287,0	6,0	9,3
F-TFC 300	324,0	6,0	11,4


**MARKING**

**Example:** cabin ventilator of nominal diameter DN=200, made of steel: CVH 200-St