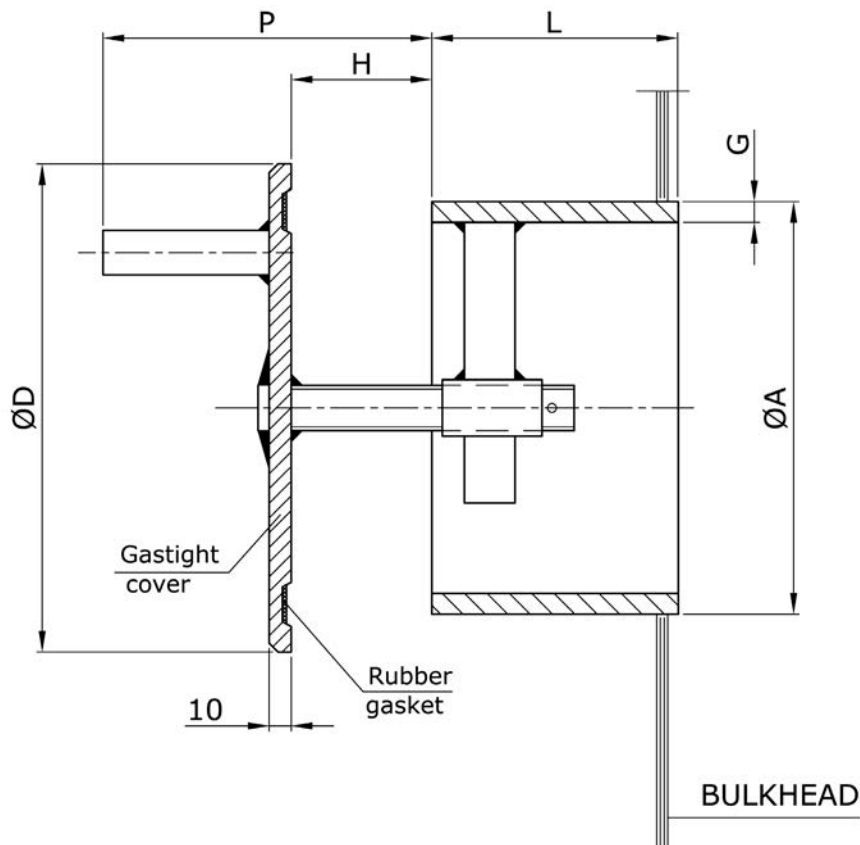


DESCRIPTION

Bulkhead transfer valves BTV are destined for installation at sheltered vertical partitions of compartments on seagoing ships as well on offshore objects. They are mainly used as air release valve, may be however used as supply units as well. Valve body is made of mild steel. Spindle is made of stainless steel, bushing of brass, gasket – rubber profile. Surface treatment: painted with epoxy primer SWA 7423-014-250 (hot dip galvanized on request).

DIMENSIONS

Dimensions [mm]					
DN	ØAxG	L	ØD	H	P
80	90x5	80	114	30	90
100	100x5	100	150	40	100
125	135x5	100	175	50	100
160	170x5	120	320	60	120
200	210x5	120	270	70	120
250	260x5	150	320	80	150
315	325x5	150	390	90	150


MARKING

Example: BTV type head of nominal diameter DN=125mm: BTV-125