

**DESCRIPTION**

The SIL silencer is made of spirally wound steel pipe as an outer casing and an internal perforated tube. The space between the outer coating and the perforated tube is filled with sound-absorbing mineral wool. The polyester fabric between the perforated tube and the mineral wool prevents wool from penetrating into the duct. The silencer is typically supplied with gaskets. Diameters  $d_1 > 315$ mm require an additional NSL coupling must be ordered. Thickness of glass mineral wool depends on the dimension of the outer casing.

**Product code:**                    **SIL - iii - aaa - bbb**

Insulation thickness

$\varnothing d_1$

L

**TECHNICAL SPECIFICATION & DIMENSIONS**
**SIL-50 – 50mm thickness insulation**

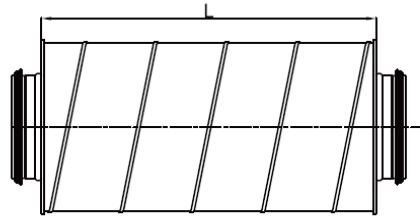
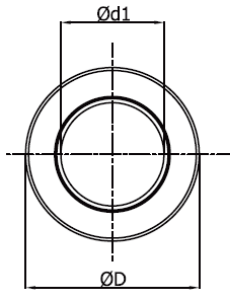
Description SIL	Dimensions [mm]			Sound insulation [dB] at frequency [Hz]							Weight [kg]
	$\varnothing d_1$	$\varnothing D$	L	125	250	500	1000	2000	4000	8000	
080-300	80	180	300	6	15	29	45	50	26	28	2
080-500	80	180	500	9	18	32	48	53	29	31	3
080-600	80	180	600	11	19	33	49	54	30	32	3
080-900	80	180	900	13	22	36	52	57	33	35	5
080-1000	80	180	1000	14	23	37	53	58	34	36	6
080-1200	80	180	1200								7
*100-300	100	200	350	5	13	26	41	44	22	24	2
*100-500	100	200	550	8	16	29	44	47	26	27	3
*100-600	100	200	650	9	17	30	45	49	27	29	3
*100-900	100	200	950	12	19	32	48	51	29	31	5
*100-1000	100	200	1050	13	21	34	49	52	30	32	6
*100-1200	100	200	1250								7
*125-300	125	224	350	4	11	22	37	41	19	21	3
*125-500	125	224	550	7	14	26	40	44	22	24	4
*125-600	125	224	650	8	15	27	41	45	24	25	4
*125-900	125	224	950	11	18	29	44	47	26	28	7
*125-1000	125	224	1050	12	19	31	45	49	27	29	7
*125-1200	125	224	1250								9
*160-300	160	250	350	3	9	20	33	35	16	18	3
*160-500	160	250	550	6	12	23	36	38	19	21	5
*160-600	160	250	650	7	14	24	37	39	21	22	6
*160-900	160	250	950	10	16	26	40	42	23	25	8
*160-1000	160	250	1050	11	17	28	41	43	24	26	8
*160-1200	160	250	1250								10
*200-300	200	300	350	2	7	16	31	31	15	16	4
*200-500	200	300	550	5	10	19	34	34	18	19	6
*200-600	200	300	650	6	11	20	35	35	19	20	7
*200-900	200	300	950	8	13	23	38	38	22	23	10
*200-1000	200	300	1050	9	15	24	39	39	23	24	11
*200-1200	200	300	1250								12

Description SIL	Dimensions [mm]			Sound insulation [dB] at frequency [Hz]							Weight [kg]
	Ød <sub>1</sub>	ØD	L	125	250	500	1000	2000	4000	8000	
*250-500	250	355	550	4	9	18	29	27	15	16	9
*250-600	250	355	650	5	11	19	30	28	16	18	11
*250-900	250	355	950	8	13	22	33	31	19	20	14
*250-1000	250	355	1050	9	14	23	33	32	20	21	12
*250-1200	250	355	1250	11	17	25	35	34	21	23	17
*250-1500	250	355	1550	12	18	26	37	35	23	24	20

\*press-formed covers

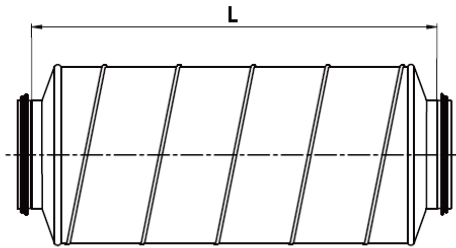
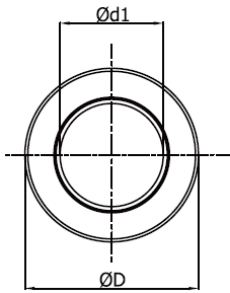
### SIL-100 – 100mm thickness insulation

Description SIL	Dimensions [mm]			Sound insulation [dB] at frequency [Hz]							Weight [kg]
	Ød <sub>1</sub>	ØD	L	125	250	500	1000	2000	4000	8000	
315-500	315	500	500	10	16	17	22	25	13	14	14
315-600	315	500	600	14	17	21	26	26	15	15	16
315-900	315	500	900	12	20	39	35	30	18	19	21
315-1000	315	500	1000	12	21	32	38	31	19	20	22
315-1200	315	500	1200	14	24	35	42	34	22	23	26
315-1500	315	500	1500	15	28	39	47	38	21	25	35
400-600	400	600	600	9	15	18	21	20	12	11	21
400-900	400	600	900	11	18	26	30	24	14	14	30
400-1000	400	600	1000	11	18	29	33	25	16	16	29
400-1200	400	600	1200	12	22	32	37	28	16	17	41
400-1500	400	600	1500	14	26	36	42	32	17	20	51
500-600	500	710	600	8	13	14	15	15	10	9	23
500-900	500	710	900	10	16	22	24	19	13	13	35
500-1000	500	710	1000	10	17	25	27	20	14	14	39
500-1200	500	710	1200	11	20	28	31	23	15	16	43
500-1500	500	710	1500	13	24	32	36	27	16	19	50
630-900	630	800	900	8	15	20	22	17	11	11	50
630-1000	630	800	1000	9	15	23	25	18	12	12	48
630-1200	630	800	1200	10	18	26	29	21	13	14	58
630-1500	630	800	1500	11	22	29	34	25	14	17	66
800-1000	800	1000	1000	8	14	20	22	15	10	10	73
800-1200	800	1000	1200	9	17	22	25	18	11	12	73
800-1500	800	1000	1500	10	21	26	30	22	12	15	103
900-1000	900	1120	1000	7	13	19	20	13	9	10	80
900-1200	900	1120	1200	8	16	22	24	16	10	11	88
900-1500	900	1120	1500	10	20	26	29	20	11	14	95



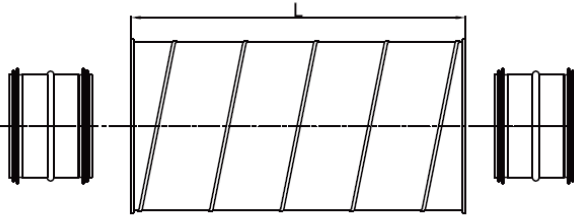
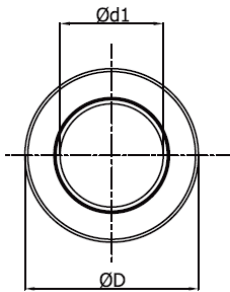
Cross-section for specific types of SIL  
 $d_1 \leq 315$  mm.

Not applicable to the diameter sizes:  
 D-100, D-125, D-160, D-200, D-250  
 with 50 mm thick insulation.



Cross-section of SIL with 50 mm thick  
 insulation; applies to the diameter  
 sizes: D-100, D-125, D-160, D-200, D-  
 250.

The silencers are fabricated with  
 press-formed-covers.



Cross-section for specific types of SIL  
 $d_1 > 315$  mm